

Winter Event

Åre Sweden 2025

Program proposal

Day 1

- 09.30 Arrival at OSD/TRD Airport
- 11.00 Presentation in conferenseroom
- 12.00 Lunch at hotel
- 13.00 Test driving part 1
- 15.00 Coffeekbreak and driver change
- 15.30 Test driving part 2
- 17.30 Check-in at hotel
- 18.00 Relax or free-time
- 20.00 Dinner in Event Lodge Åre

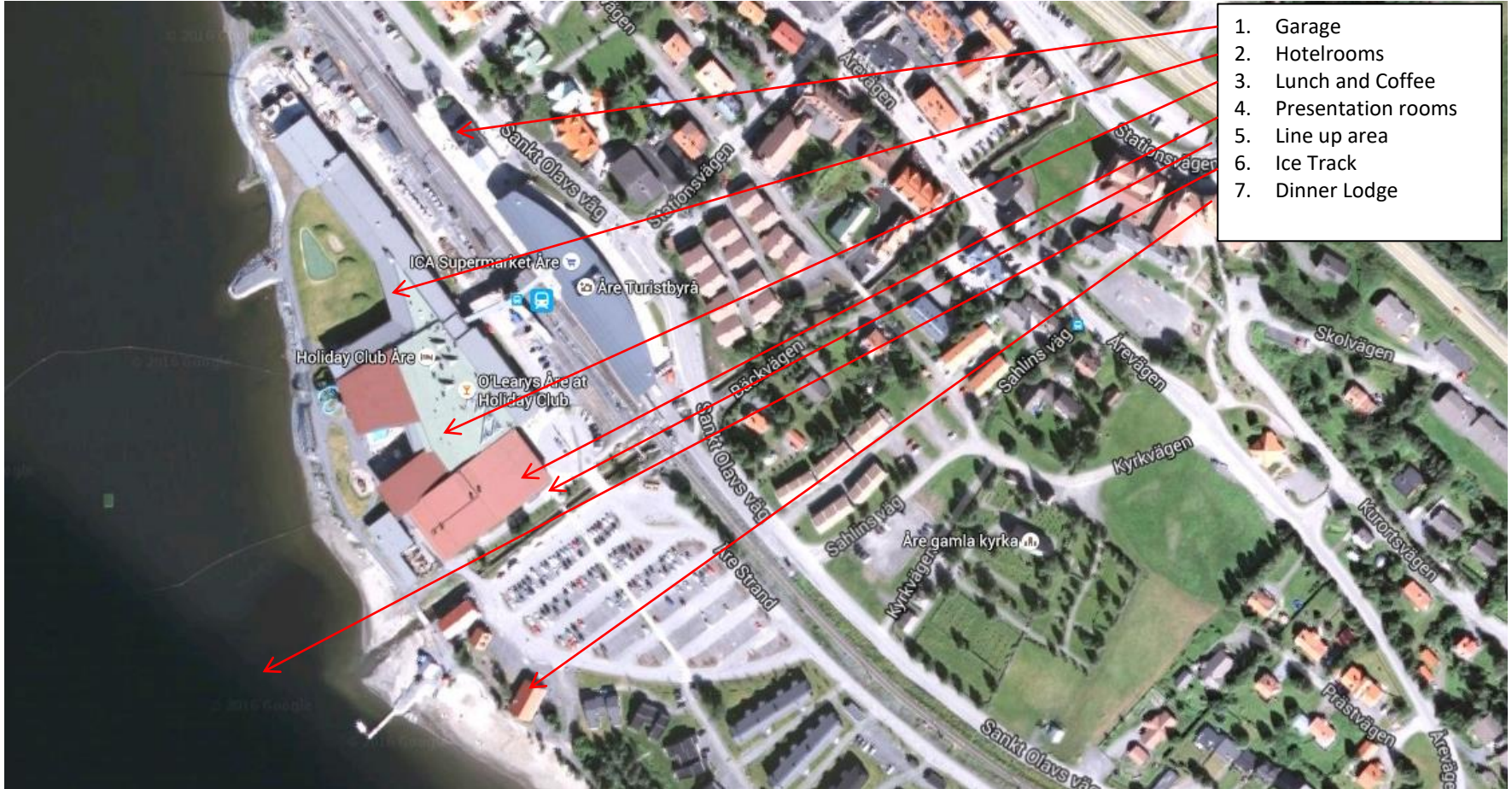


Day 2

- 07.00 Breakfast and check out
- 08.30 Test driving part 3
- 10.30 Coffeekbreak and driver change
- 11.00 Test Driving Part 4
- 13.00 Lunch
- 14.00 Transfer to airport
- 16.00 Departure from Airport

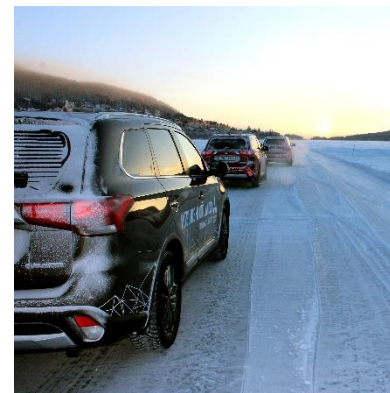


Overview



Flow chat proposal

<u>Date</u>	<u>Arrivals</u>	<u>Departures</u>	<u>Aprox. group size</u>
Monday	Group 1		40
Tuesday	Group 2	Group 1	40 + 40
Wednesday	Group 3	Group 2	40 + 40
Thursday	Group 4	Group 3	40 + 40
Friday	Group 4		40



Test driving part 1 + 2

- Arctic Driving Åre Ice Track

10 cars with 2 person split in 2 stations

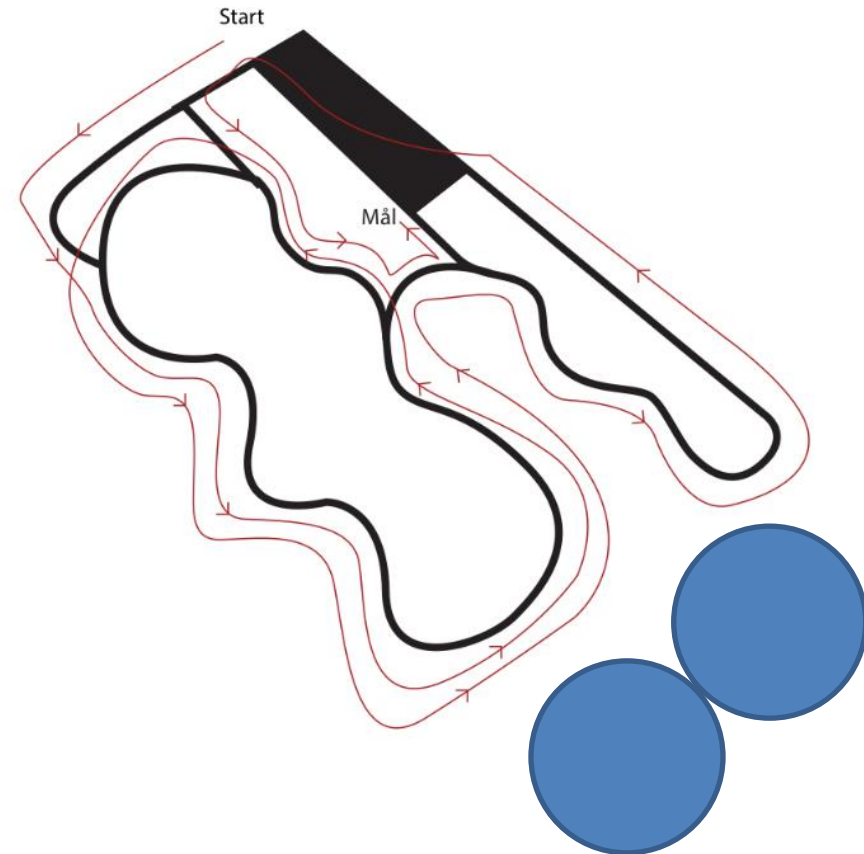
Station 1

Big handling track whit space for drifting on the edge.

Station 2

A Breaking avoiding (Elk test) with tight slalom course on the return.

B Skidding in 2 big circles.



Test driving part 3

- Roadbook up to the mountain top

5 cars with 2 person

From the Arctic Driving Ice track up and over the ridge of Åre mountain. It's a public road but not so busy. When its good weather it gives a lot of picture moments. We drive down to the valley behind and on the way back we stop at Molanda race track.



Test driving part 4

- Molanda Race Track

20 min roadbook from the hotel to the Molanda Racetrack there we drive on the circuit of Colin McRae. He was one of the founder to create this race track. During the winter is prepared as a snowtrack.

(It's even a backup track if the ice is poor or we have bad weather)

5 cars with 2 person on a snow handling track and 1 Lorry with instructor.



Presentation and lunch and coffee

- Presentation room

In the hotel is plenty of areas to create presentations in different size and rooms even in 1500 sqm Åre Arena



- Restaurang

Inside the hotel just beside the Iceltrack on the left we have our lunch and coffee breaks. There is nearby access to the toilets



Hotel/Dinner Lodge

- **Hotel**

244 rooms with great views of the mountains and our Åre Ice track. Balcony, free wifi, minibar, TV, gym, SPA, pool and sauna world



- **Dinner Lodge**

Old rustic lodge with room for 100 guests. Garderob, toilets, bar and piano. Fantastic meny and all is from local producers



Airports/transfer

- Åre/Östersund Airport (OSD) Sweden
- Trondheim International Airport (TRD) Norway

